

# Office to let

## Omnilogic Campus

Otopeni, 36, I.G. Duca St.



### Building information

Building status	Existing
Year of construction	2014
Total building area	29 000 sq m

### Commercial terms

Office space*	after login *
Parking	after login *
Service charge*	after login *
Minimum lease term	after login *
Availability	after login *

\* Asking terms for m<sup>2</sup>/month

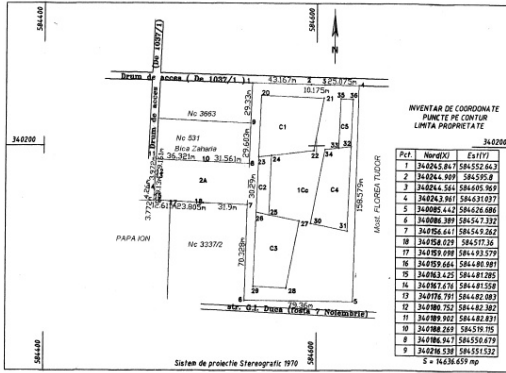
### Location



### Available space

Building completely leased

Typical floor plan



Contact

+40 21 302 3400

More information